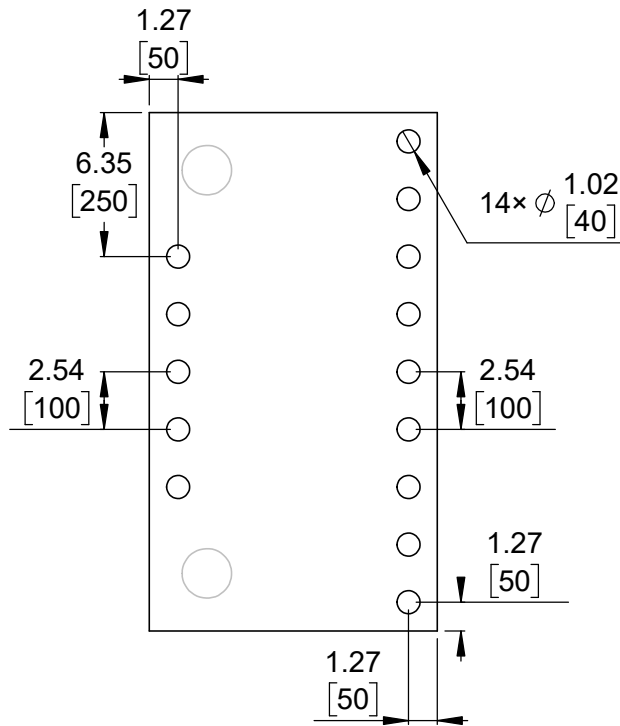
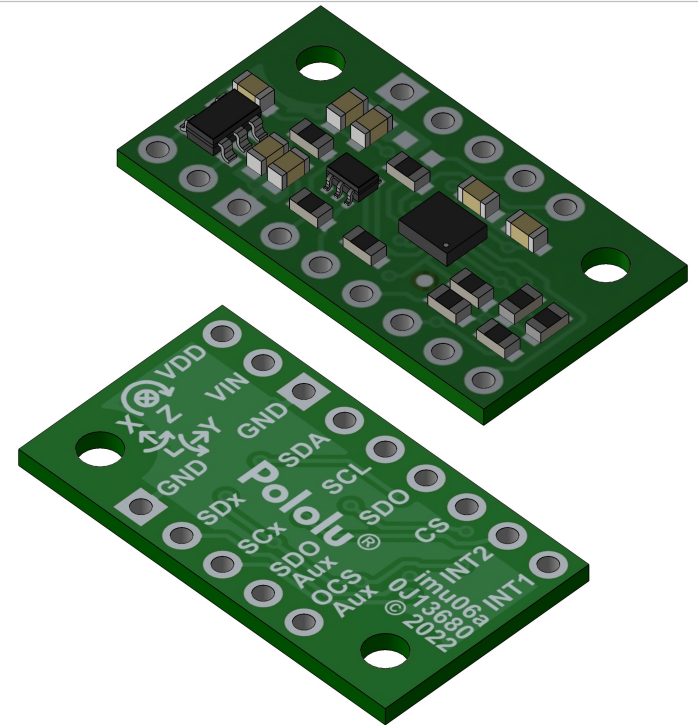


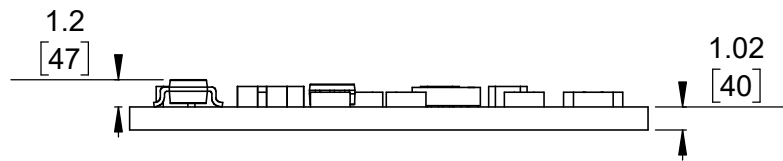
1 Board dimensions (top view)  
Scale 3:1



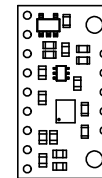
2 Connector callouts (bottom view)  
Scale 3:1



3 Isometric view  
Scale 3:1



4 Profile  
Scale 3:1



5 Actual size  
Scale 1:1

- 1. Intended for M2 or #2 screws.
- 2. To get the specified scale, select 100% in print settings.
- 3. Drill location tolerance:  $\pm 0.1$  [ $\pm 5$ ].
- 4. Board edge tolerance:  $\pm 0.3$  [ $\pm 10$ ].

<a href="https://www.pololu.com/product/2798">https://www.pololu.com/product/2798</a>	
Name: LSM6DSO 3D Accelerometer and Gyro Carrier with Voltage Regulator	Item number: 2798
Drawing date: 30 August 2022	Dev code: imu06a
Units: mm [mil]	Material: mixed

