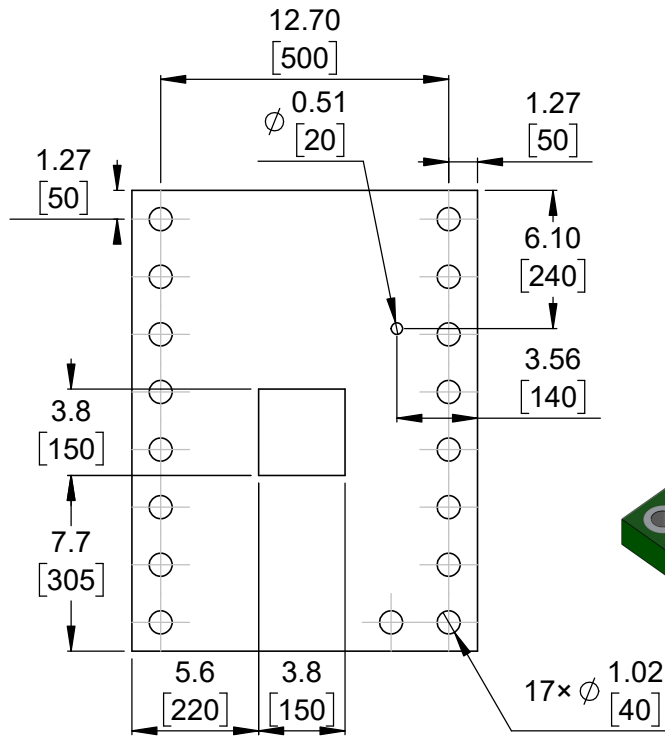
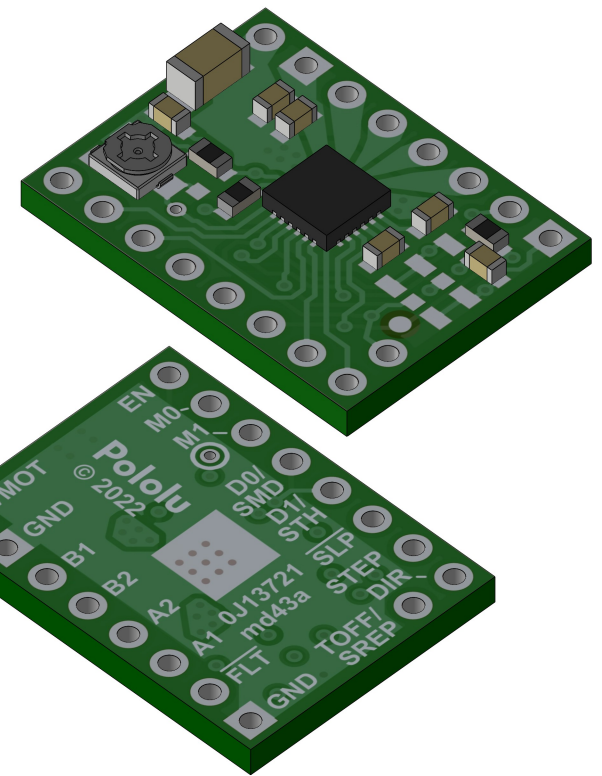


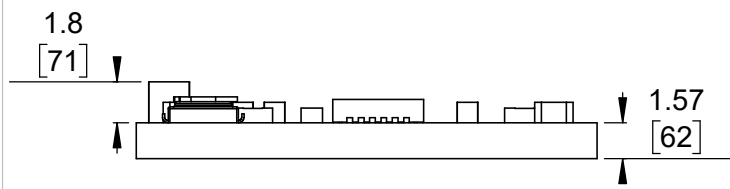
1 Board dimensions (top view)  
Scale 3:1



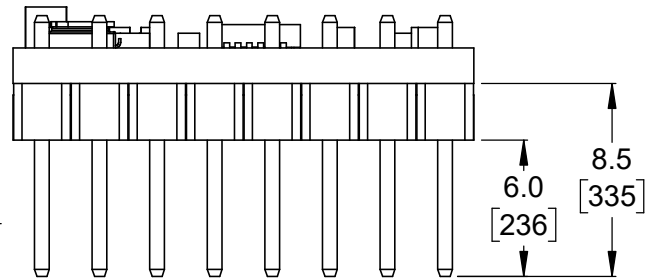
2 Connector callouts (bottom view)  
Scale 3:1



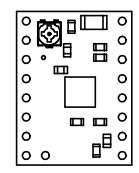
3 Isometric view  
Scale 3:1



4 Profile  
Scale 3:1




5 Profile with headers  
Scale 3:1

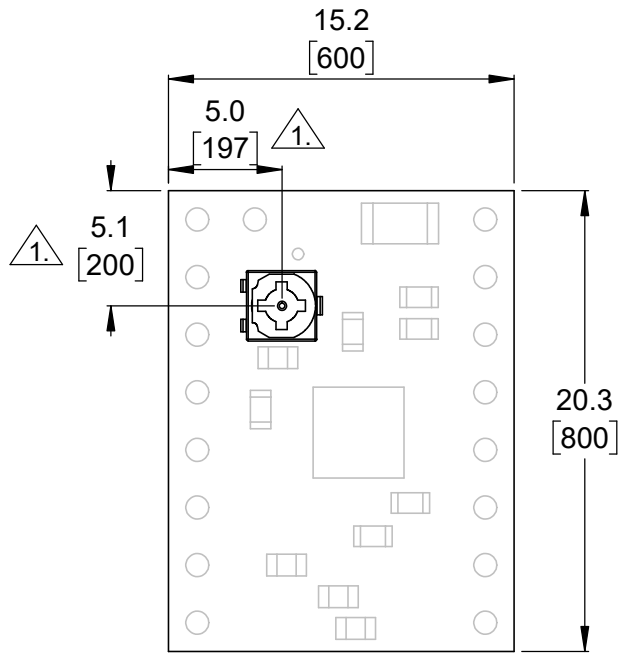


6 Actual size  
Scale 1:1

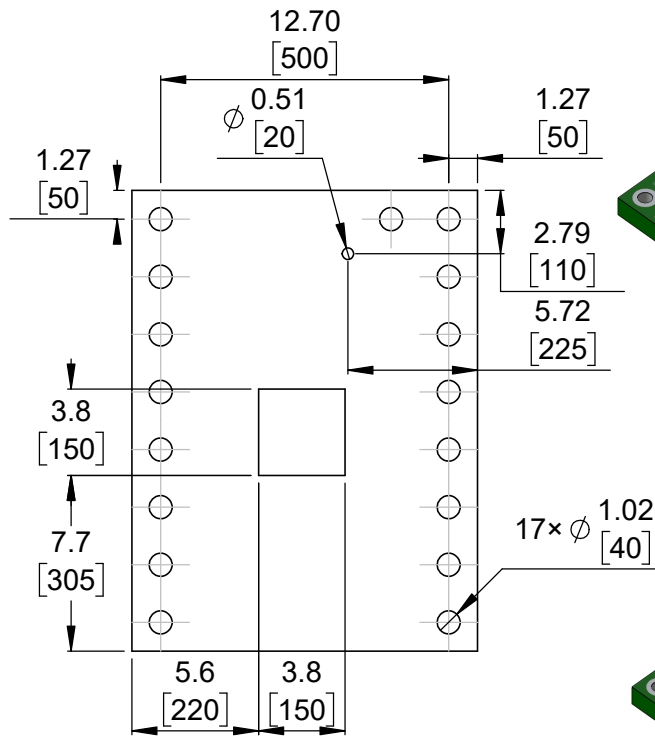
1. Grid lines indicate 2.54 mm [100 mil] spacing.
2. To get the specified scale, select 100% in print settings.
3. Drill location tolerance:  $\pm 0.1$  [ $\pm 5$ ].
4. Board edge tolerance:  $\pm 0.3$  [ $\pm 10$ ].

<https://www.pololu.com/category/294>

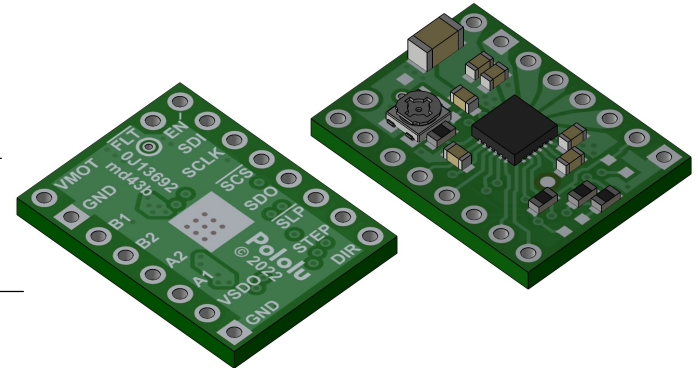
Name: DRV8434A Stepper Motor Driver Carrier		Item number: 3764-3765
Drawing date: 19 September 2022	Dev code: md43a	 © 2022 Pololu Corporation
Units: mm [mil]	Material: mixed	



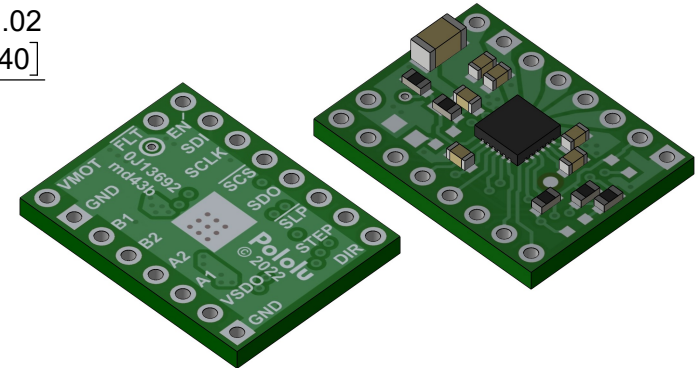
1 Board dimensions (top view)  
Scale 3:1



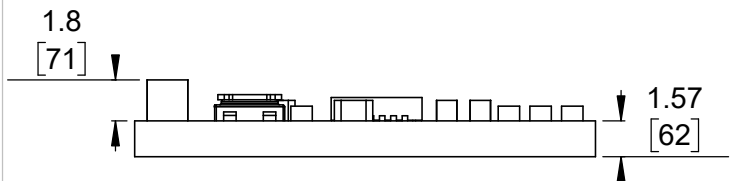
2 Connector callouts (bottom view)  
Scale 3:1



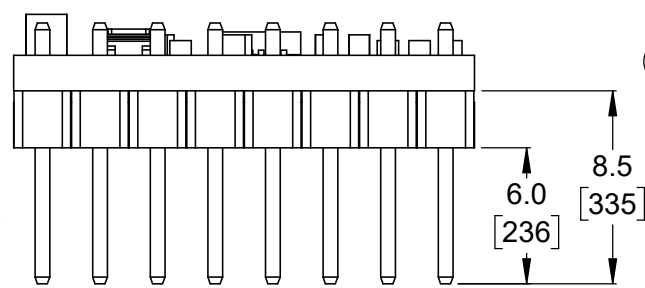
3 Isometric view (potentiometer for max. current limit)  
Scale 2:1



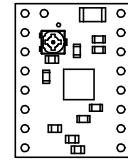
4 Isometric view (2A max. current limit)  
Scale 2:1



5 Profile  
Scale 3:1



6 Profile with headers  
Scale 3:1



7 Actual size  
Scale 1:1

- 1. Potentiometer not populated on 2A max. current limit models.
- 2. Grid lines indicate 2.54 mm [100 mil] spacing.
- 3. To get the specified scale, select 100% in print settings.
- 4. Drill location tolerance:  $\pm 0.1$  [ $\pm 5$ ].
- 5. Board edge tolerance:  $\pm 0.3$  [ $\pm 10$ ].

<a href="https://www.pololu.com/category/294">https://www.pololu.com/category/294</a>	
Name: DRV8434S SPI Stepper Motor Driver Carrier	Item number: 3766-3769
Drawing date: 19 September 2022	Dev code: md43b
Units: mm [mil]	Material: mixed

