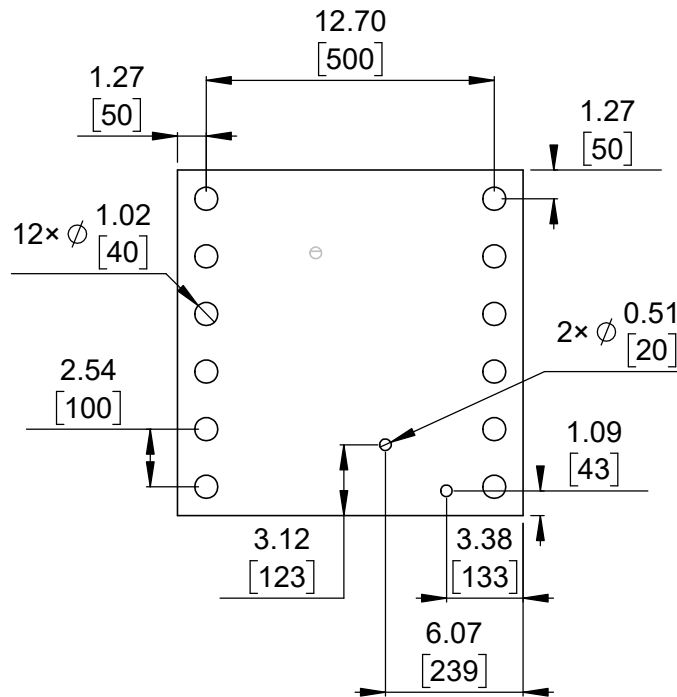
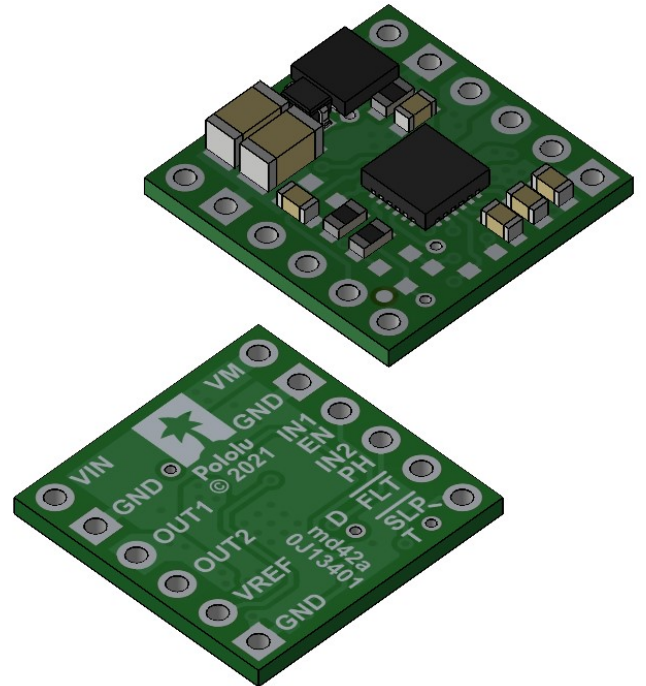


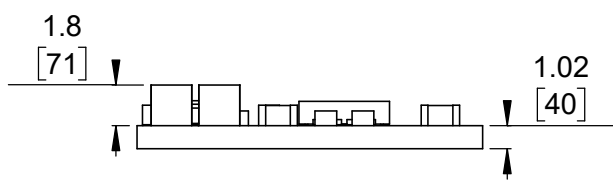
① Board dimensions (top view)
Scale 3:1



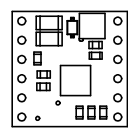
② Connector callouts (bottom view)
Scale 3:1



③ Isometric view
Scale 3:1



④ Profile
Scale 3:1



⑤ Actual size
Scale 1:1

1. To get the specified scale, select 100% in print settings.
2. Drill location tolerance: ± 0.1 [± 5].
3. Board edge tolerance: ± 0.3 [± 10].

https://www.pololu.com/product/4038	
Name: DRV8256x Single Brushed DC Motor Driver Carrier	Item number: 4038, 4039
Drawing date: 31 August 2021	Dev code: md42a
Units: mm [mil]	Material: mixed

