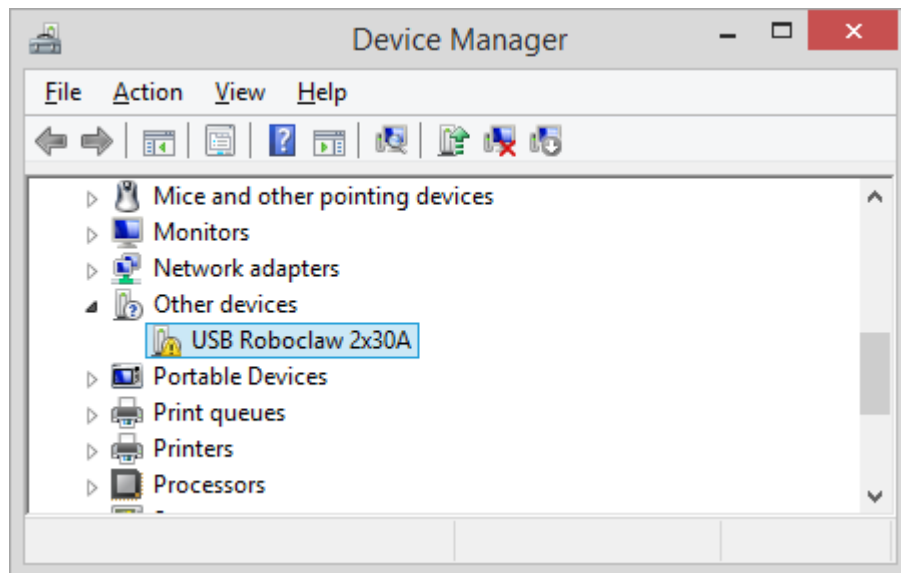


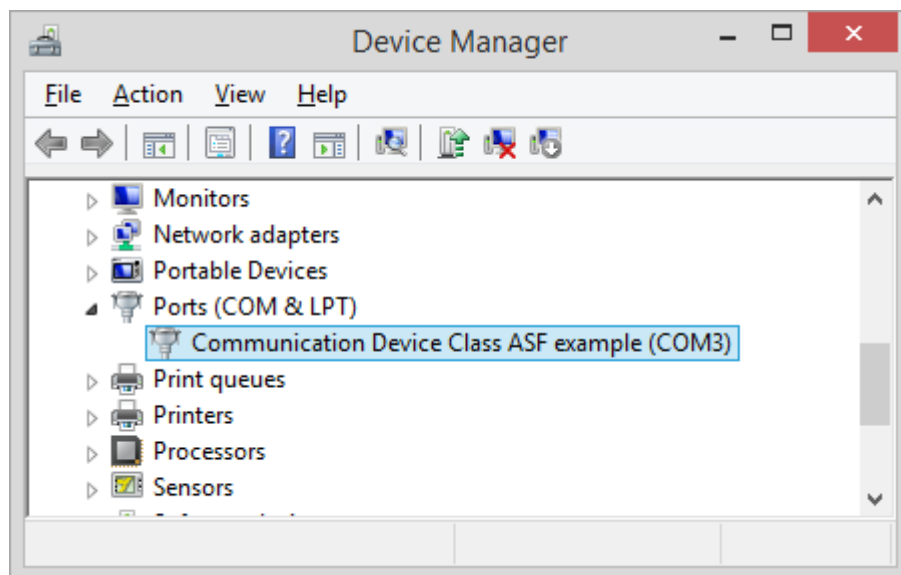
Installation Instructions

1. Check if you need the driver installed. Connect a powered Roboclaw to the PC with a USB cable. Open the Device Manager. You can click Start and type “Device Manager” to open the Device Manager.

If you don't have the proper driver already installed(the model name may differ):

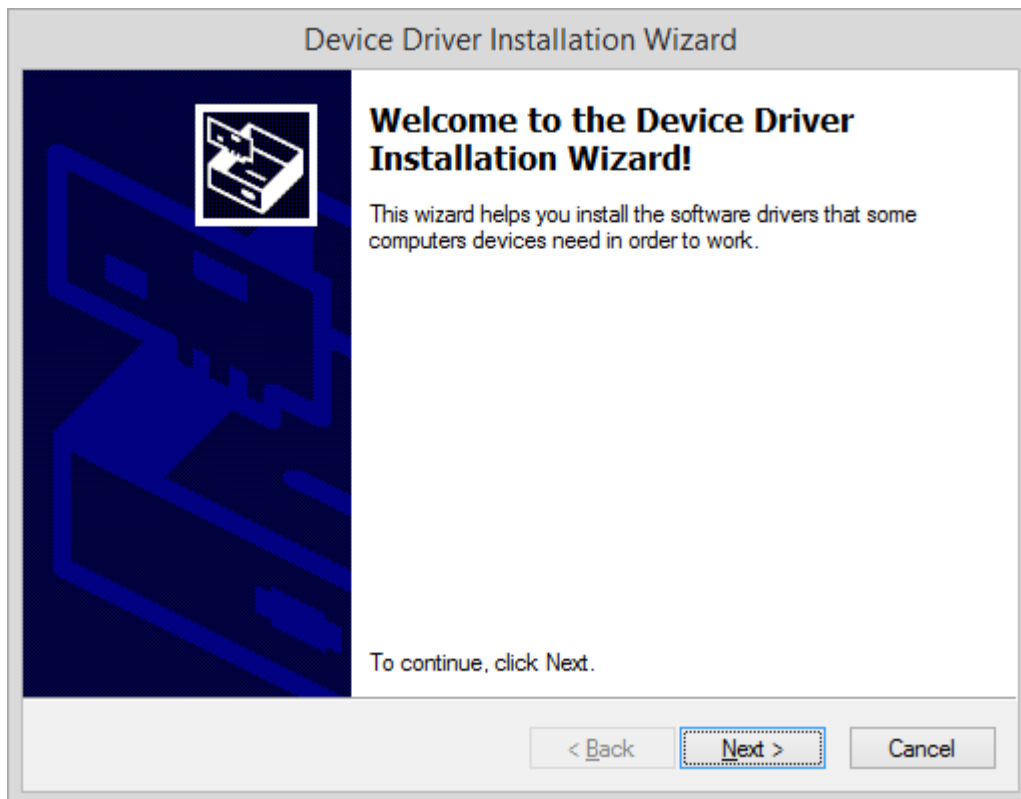


If you already have the proper Atmel driver installed(the comport number may differ):

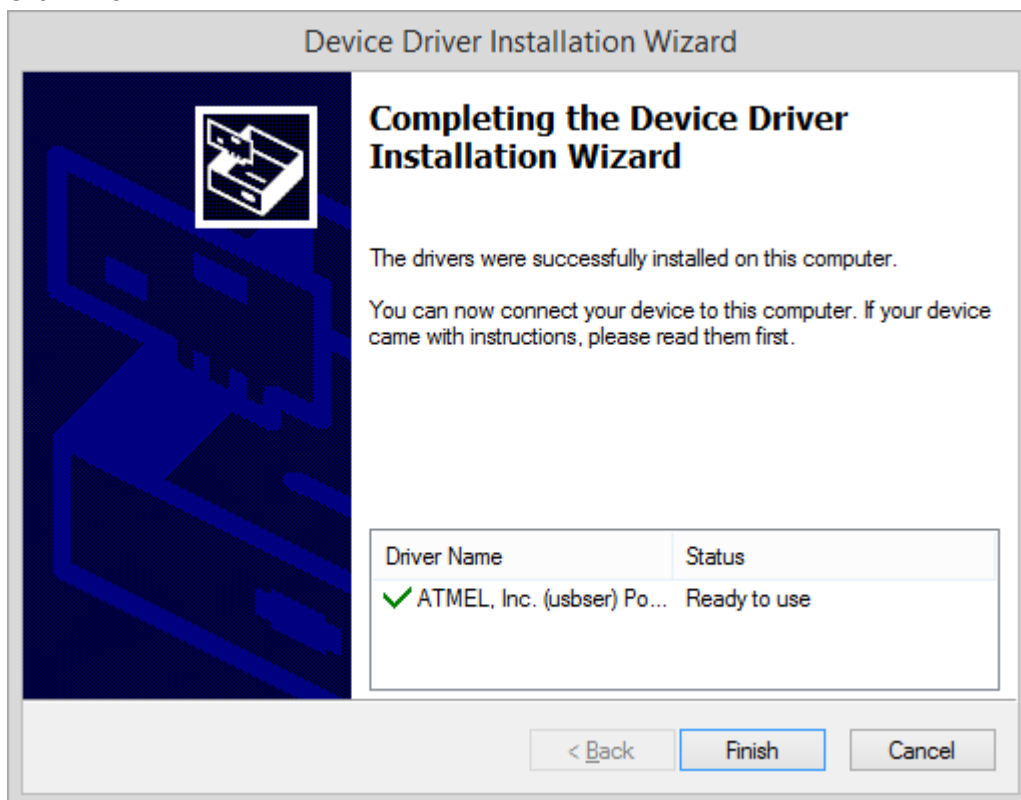


2. If you need to install the driver first disconnect the Roboclaw from the PC if it is connected.
3. To install the driver on a 32bit Windows system, double click DPinst.exe.
To install the driver on a 64bit Windows system, double click DPinst64.exe.
4. Allow the program permission to run if you have User Access Control enabled

5. Click Next



6. Click Finish



7. Re-Connect the Roboclaw to the PC. Device Manager should now show(the comport number may differ):

