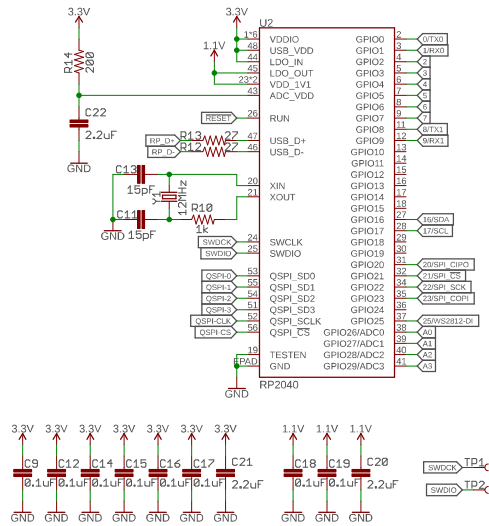
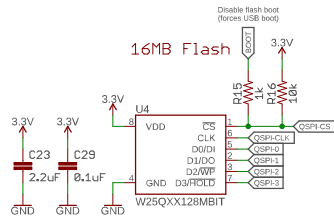


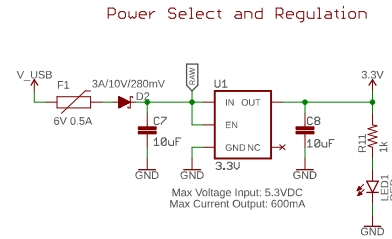
### Raspberry Pi RP2040



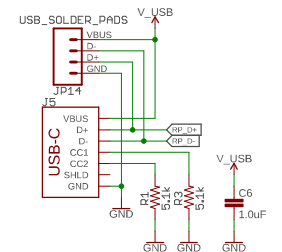
### 16MB Flash



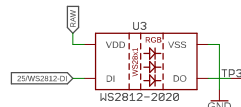
### Power Select and Regulation



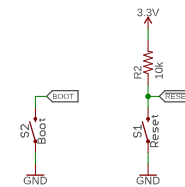
### USB



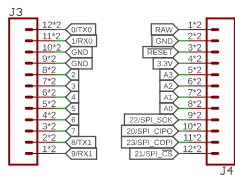
### Status LED



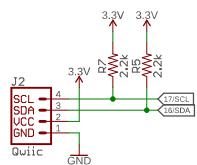
### Boot / Reset Buttons



### Connections



Max Voltage on RAW: 5.3V  
V-Reg can handle up to 6V  
but WS2812 max is 5.3V



|  |  |                             |
|--|--|-----------------------------|
| Released under the Creative Commons Attribution Share-Alike 4.0 License<br><a href="https://creativecommons.org/licenses/by-sa/4.0/">https://creativecommons.org/licenses/by-sa/4.0/</a> |  | <b>Special Instructions</b> |
| TITLE: SparkFun_ProMicro-RP2040  |  | ☒                           |
| Design by:   |  | REV: v11                    |
| Date: 3/16/2021 11:00 AM   |  | Sheet: 1/1                  |