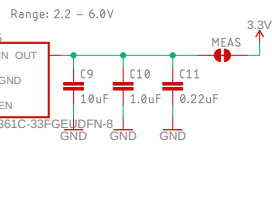
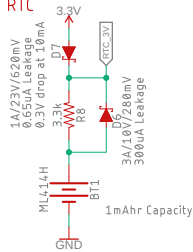


### Voltage Regulation

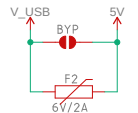


Close this jumper to control the VREG in super low-power modes

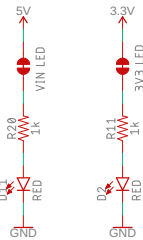
### RTC



This is the penny-in-the-fuse jumper. Close only if you know what you're doing.

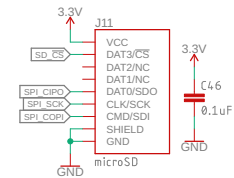


### LEDs

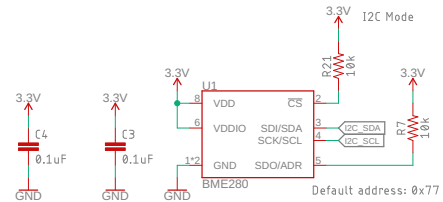


Cut these jumpers to remove power LEDs.

### µSD

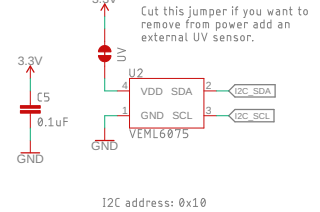


### BME280 – Temp, Pressure, Humidity



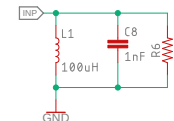
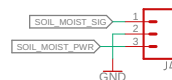
Default address: 0x77

### UV Sensor

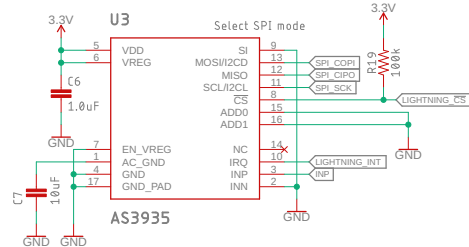


I2C address: 0x10

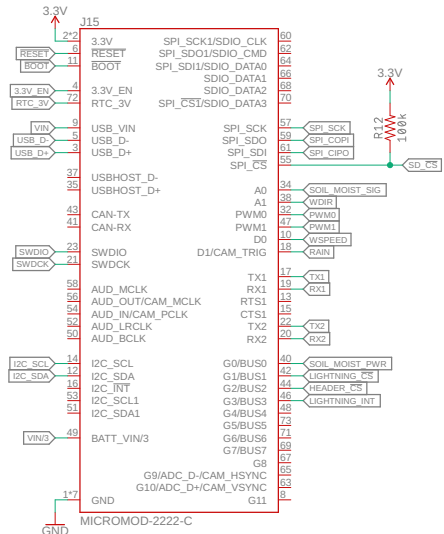
### Soil Moisture Sensor Connector



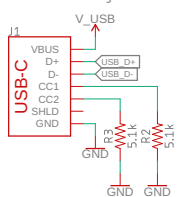
### Lightning Detector



### Universal MicroMod Connector

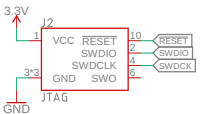


### USB

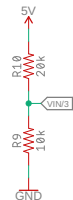
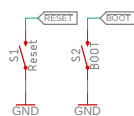


Range: 4.2 – 5.2V

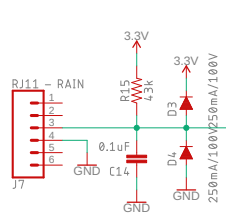
### JTAG



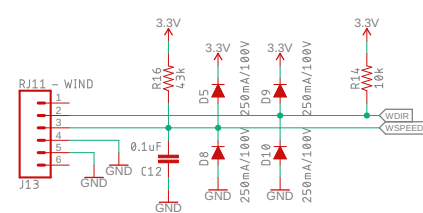
STAND-OFF-REFLOW2.5MM\_TALL



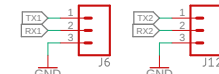
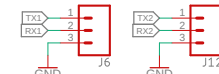
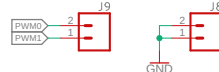
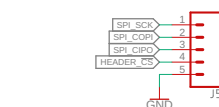
### Rain



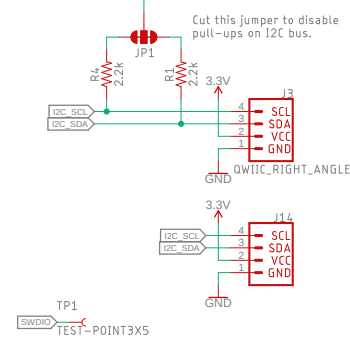
### Wind



### GPIOs



### Qwiic



Cut this jumper to disable pull-ups on I2C bus.



Qwiic



Released under the Creative Commons Attribution Share-Alike 4.0 License <https://creativecommons.org/licenses/by-sa/4.0/>

TITLE: WeatherStation-MM-Carrier

Design by: Priyanka Makin

REV: v11

Date: 12/3/2020 11:37 AM

Sheet: 1/1