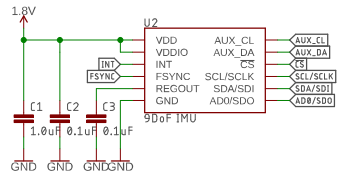
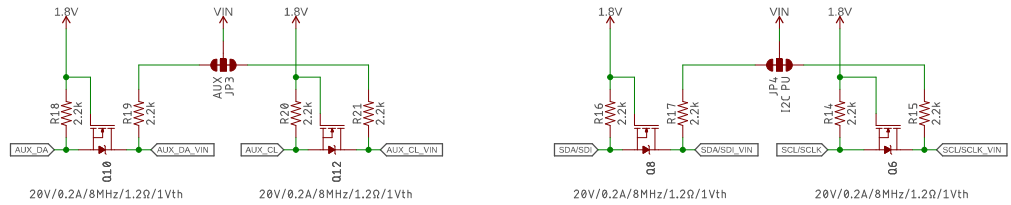


IMU (ICM-20948)

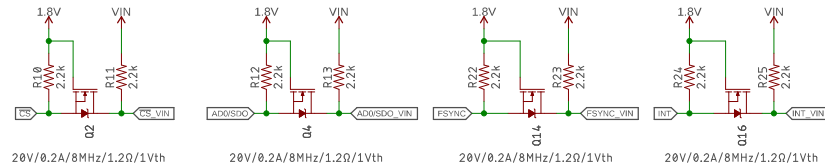


I2C Level Shifting + Pullup Disconnects

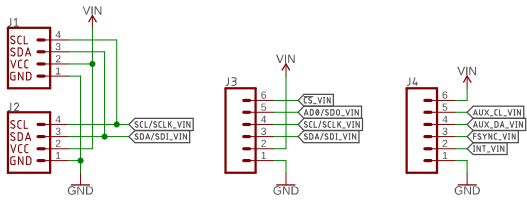
Optionally disconnect the I2C pullup resistors on the primary and auxiliary busses in case of too strong pullup from other sources



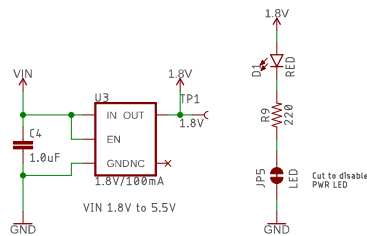
SPI / Interrupt Level Shifting



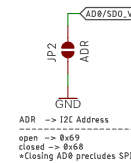
Connections



Voltage Regulator



Address Option



Released under the Creative Commons Attribution Share-Alike 4.0 License
<https://creativecommons.org/licenses/by-sa/4.0/>

TITLE: SparkFun_IMU_Breakout_ICM-20948

Design by: Owen Lyke REV: v31

Date: 6/26/2019 1:45 PM Sheet: 1/1