

Specification for approval

Name: PCM
Voltage: 3.7V
Model: RD-1428

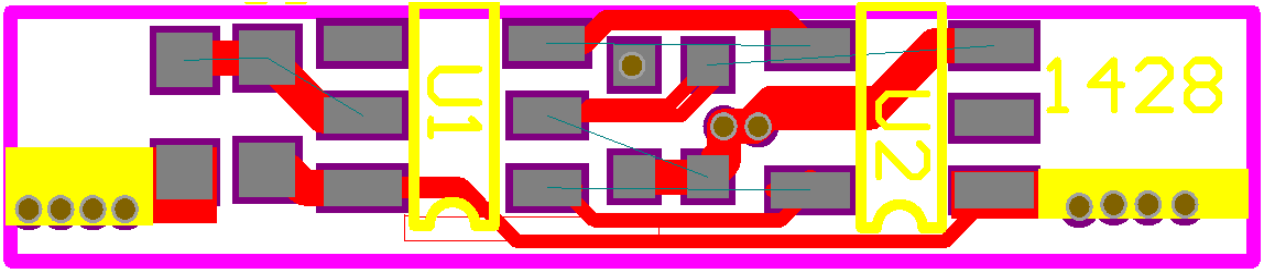
Component

1.Control IC : DW01

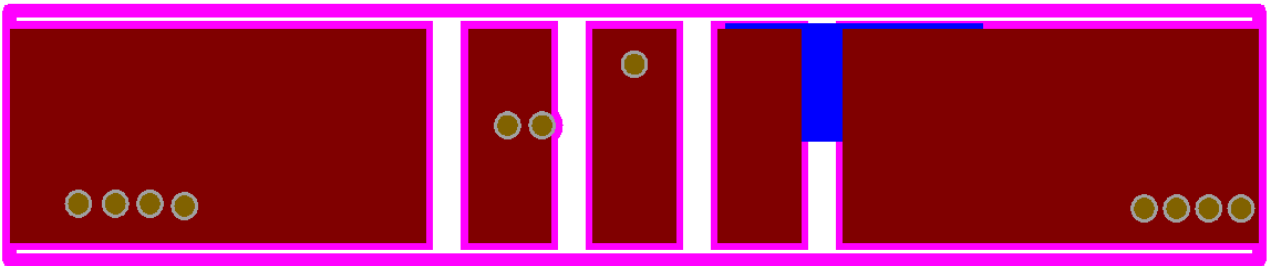
2.MOS : 8205A

No.	Test content	Standard	Test data			
			1	2	3	4
VOC	Over charge protect voltage	4.275V+25mV/-50mV				
VDL	Over discharge protect voltage	2.50±0.075V				
VDIP	Over current protect voltage	0.14 ± 0.02V				
TOC	Over charge protect delay	80mS ± 30%				
TOD	Over discharge protect delay	40mS ± 30/%				
TTEC	Over discharge current protect delay	7.0mS ± 30%				
TSHORT	Load short-circuit detection delay time	80 ± 40μS				
IDD	static current consumption	I ≤ 6.0uA				
RDS	PCB Restiance	R ≤ 60mΩ				

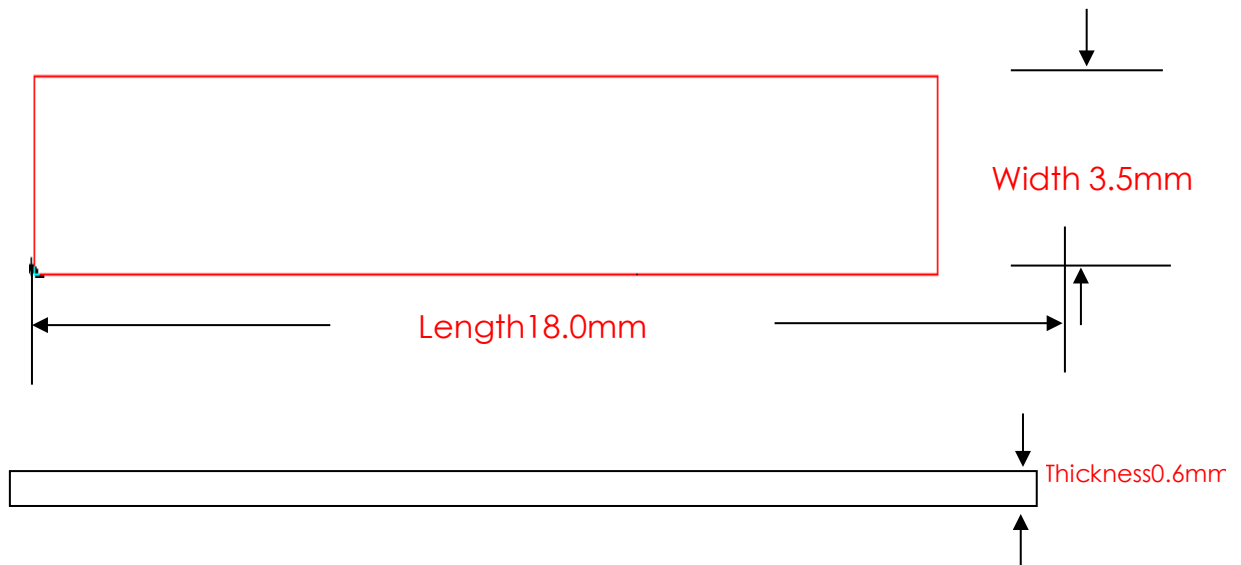
SMD pcb board diagram (front)



PCB board external view (negative)



PCB Size



Note:

Length $\pm 0.15\text{mm}$, Width $\pm 0.10\text{mm}$, Thickness 0.10mm

PCB 原理图

